

Chrome Effect Photoshop Tutorial

The essential chrome effect, don't leave home without it. This works on any object, not just text.

INGREDIENTS

[by Colin Smith](#)

- Type
 - Gradients
 - Layer Styles
 - Layers
 - Filters
 - Curves
 - **Difficulty 5/10**
-

[More Great Tutorials](#)

[PhotoshopCAFE home](#)

1



Create your type layer, or import your shape that you want to turn into shiny chrome. Render type: right click/mac Cmd click the name on the layer and select "render type". This converts your text to an object, so you can apply all the filters to it.

2

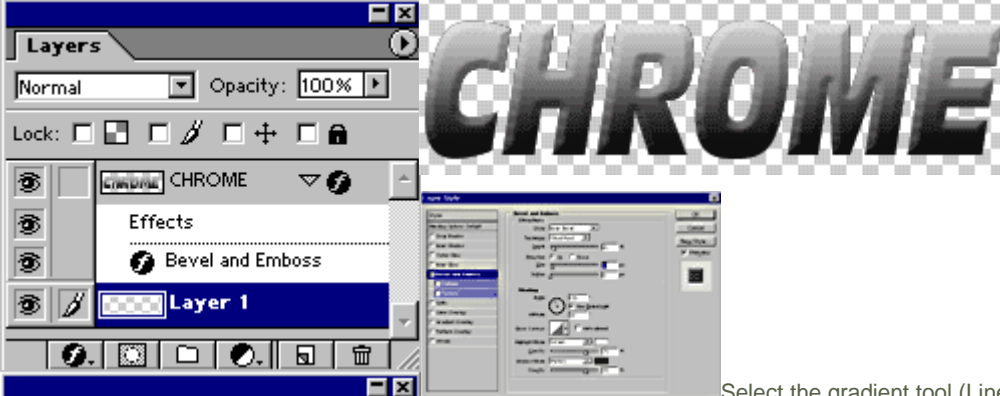


select a dark gray for your foreground color and



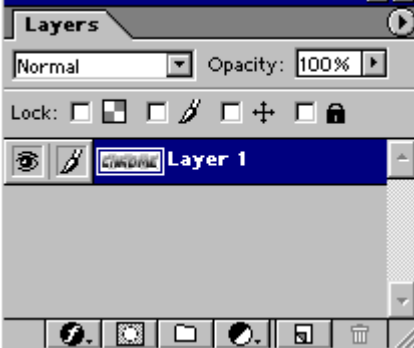
a light gray for your background.

3



Select the gradient tool (Linear, fore to background) and drag from the top to the bottom of the image. [Tip: Hold down the shift key to constrain to 90 degrees.](#)

4



Add a bevel to the type using the Layer style - Bevel and emboss. Your type should look like this now.

Fig. 1

5

Now we want to remove the layer style, but we want to keep the bevel (Merge the effect into the layer).

We do this by adding a new layer and dragging it directly underneath the layer with the effect ("Chrome" layer). [See fig. 1.](#)

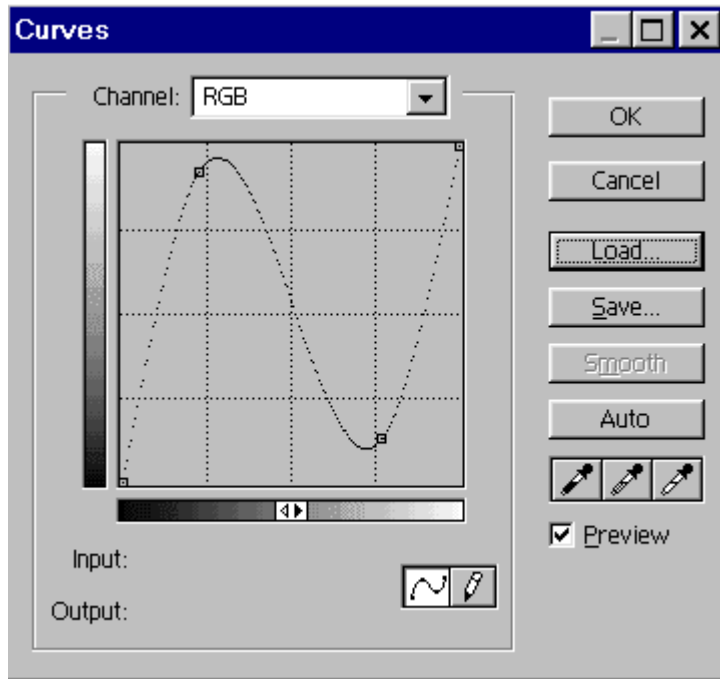
Now select the "Chrome" layer thumbnail and press [Cmd/Ctrl+E](#) This merges the selected layer with the one directly under it and "renders all effects" [See fig. 2](#)

6



Apply the plastic wrap filter. This is found under Effects>Artistic

7



Making the Chrome

This is where it all happens: Open Image>Adjust>Curves [Cmd/Ctrl+M](#) and make a curve like the one in the example.

Or you can click [here](#) to upload the curve if you wish

8



Click ok.

The image shows the results of the curve applied to the image.

9



Repeat the same settings, by holding down the Alt/Option key as you open the dialog box Image>Adjust>Curves or [Option+Cmd/Alt+Ctrl+M](#)

The result as shown here

If you want, Colorize the image with the [hue/saturation](#).



This is how it looks after applying a black background color.

NOTE: In Photoshop CS and CS2 you can make chrome by choosing the double ring setting in the Layers Styles (Bevel -Gloss Contour)

For more cool techniques like this on an easy to follow video format check out Photoshop Secrets Special FX photoshopCD.com